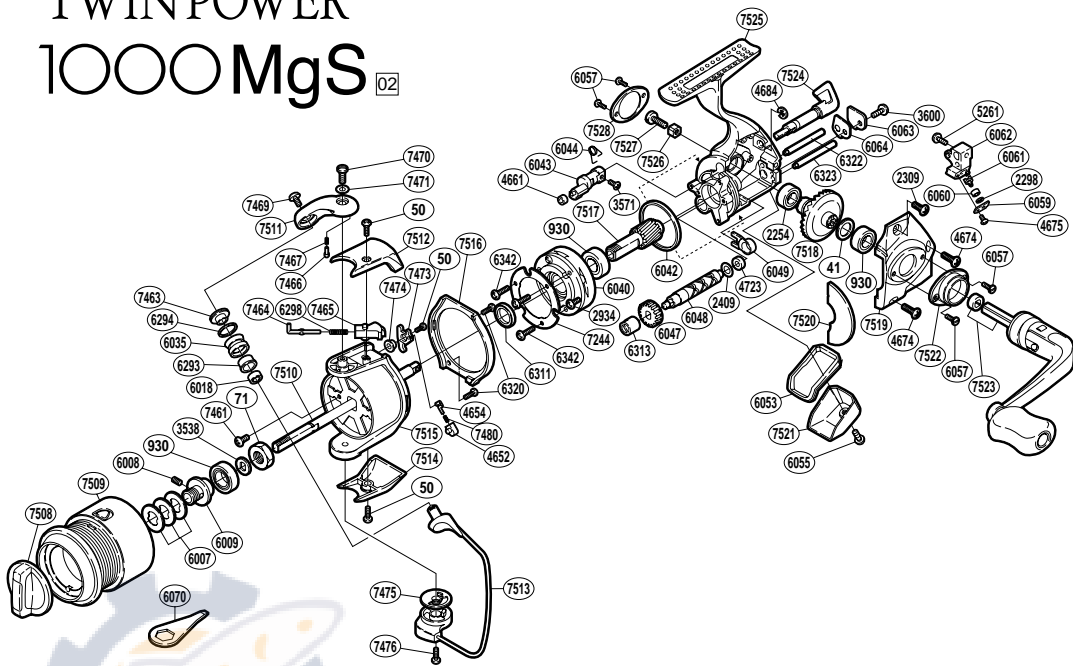


# TWIN POWER 1000MgS 02



| RD No. | PARTS NAMES                  | RD No. | PARTS NAMES                | RD No. | PARTS NAMES              |
|--------|------------------------------|--------|----------------------------|--------|--------------------------|
| 0041   | Drive Gear Washer            | 6047   | Idle Gear                  | 7469   | Line Roller Screw        |
| 0050   | Multi-Purpose Screw          | 6048   | Worm Shaft                 | 7470   | Bail Arm Screw           |
| 0071   | Rotor Nut                    | 6049   | Bushing                    | 7471   | Bail Arm Screw Washer    |
| 0930   | Ball Bearing                 | 6053   | Rear Shield                | 7473   | Bail Trip Lever          |
| 2254   | Ball Bearing                 | 6055   | Rear Protector Screw       | 7474   | Bail Trip Lever Washer   |
| 2298   | Spacer                       | 6057   | Cap Screw                  | 7475   | Bail Hold Support Spacer |
| 2309   | Side Cover Screw (short)     | 6059   | Oscillating Pawl Cover     | 7476   | Bail Hold Support Screw  |
| 2409   | Worm Shaft Spacer            | 6060   | Oscillating Slider Bushing | 7480   | Lever Spring             |
| 2934   | Clutch Cover Screw           | 6061   | Oscillating Pawl           | 7508   | Drag Knob                |
| 3538   | Spool Support                | 6062   | Oscillating Slider         | 7509   | Spool Assembly           |
| 3571   | Anti-Reverse Cam Screw       | 6063   | Worm Shaft Retainer        | 7510   | Main Shaft               |
| 3600   | Worm Shaft Retainer Screw    | 6064   | Worm Shaft Retainer Washer | 7511   | Bail Arm                 |
| 4652   | Lever Spring Guide (B)       | 6070   | Wrench (accessory)         | 7512   | Bail Spring Cover        |
| 4654   | Lever Spring Guide (A)       | 6293   | Line Roller Bushing        | 7513   | Bail Assembly            |
| 4661   | Anti-Reverse Cam Ring        | 6294   | Line Roller Spacer         | 7514   | Bail Hold Support Guard  |
| 4674   | Side Cover Screw             | 6298   | Bail Spring                | 7515   | Rotor                    |
| 4675   | Oscillating Pawl Cover Screw | 6311   | Rotor Spacer               | 7516   | Rotor Guard              |
| 4684   | "E" Lock                     | 6313   | Worm Bushing (front)       | 7517   | Pinion Gear              |
| 4723   | Worm Bushing (rear)          | 6320   | Rotor Guard Screw          | 7518   | Drive Gear               |
| 5261   | Slider Retainer Screw        | 6322   | Oscillating Guide (A)      | 7519   | Side Cover               |
| 6007   | Spool Washer                 | 6323   | Oscillating Guide (B)      | 7520   | Side Cover Flange        |
| 6008   | Set Screw                    | 6342   | Roller Clutch Screw        | 7521   | Rear Protector           |
| 6009   | Bearing Bushing              | 7244   | Roller Clutch Reinforce    | 7522   | Handle Screw Cap (A)     |
| 6018   | Ball Bearing                 | 7461   | Nut Lock Screw             | 7523   | Handle Assembly          |
| 6035   | Line Roller                  | 7463   | Line Roller Washer         | 7524   | Anti-Reverse Lever       |
| 6040   | Roller Clutch Assembly       | 7464   | Bail Spring Guide (A)      | 7525   | Body                     |
| 6042   | Friction Ring                | 7465   | Bail Spring Guide (B)      | 7526   | Handle Lock Washer       |
| 6043   | Anti-Reverse Cam             | 7466   | Click Pin                  | 7527   | Handle Lock Screw        |
| 6044   | Anti-Reverse Cam Spring      | 7467   | Click Spring               | 7528   | Handle Screw Cap (B)     |